



MASON INDUSTRIES, Inc.

MERCER RUBBER Co.

350 Rabro Drive, Hauppauge, NY 11788
Mason- 631/348-0282 • Info@Mason-Ind.com
Mercer- 631/582-1524 • Info@Mercer-Rubber.com
FAX 631/348-0279

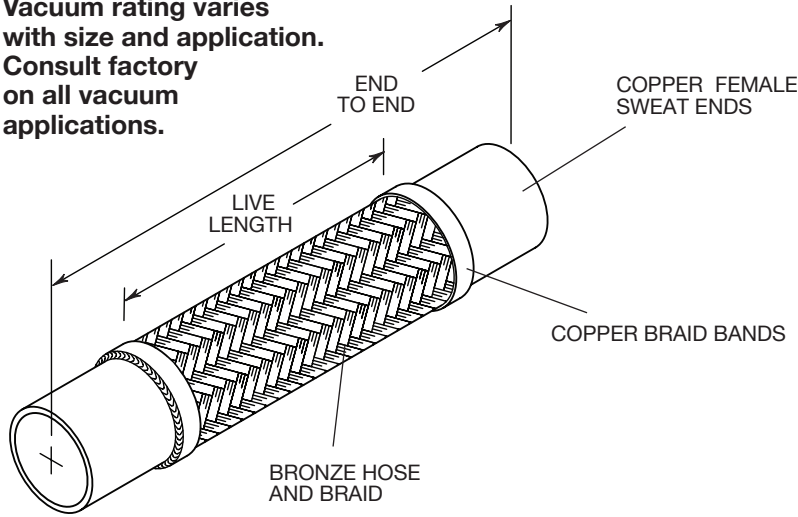


JOB NAME
CUSTOMER
CUSTOMER P.O.
MASON M.
DWG No.

CPSB

BRAIDED
BRONZE
HOSE with
COPPER
SWEAT ENDS

Vacuum rating varies with size and application. Consult factory on all vacuum applications.



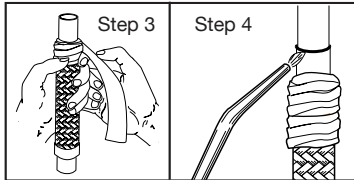
WARNING! If disinfecting (chlorinating) is required per the International Plumbing Code, AWWA C651, and AWWA C652, then tablets and granular chlorine (calcium hypochlorite), and chlorine for swimming pool disinfection CANNOT be used on our products. We recommend chlorinating with diluted liquid chlorine (sodium hypochlorite) and immediately flushing thoroughly with potable water, as defined in the above Code. All traces of chlorine must be removed, since residual chlorine will cause corrosion and lead to premature failure of our products. Failure to do so will void our warranty. Mason recommends installing hoses vertically where feasible to promote drainage of chlorine.

Industry Standard Pump Connectors

Short lengths conserve space but allow minimum motion and attenuation. Offset Ratings are industry standard.

INSTALLATION:

- 1. Thoroughly clean male and female ends using steel wool and steel brushes.
2. Apply flux.
3. Wrap base of copper fitting on connector and 2" (50mm) of the braid with a wet cloth to prevent overheating during soldering.
4. Direct the torch away from the base of the copper fitting and braided section. Avoid contact of the flame with the base of the copper fitting and braid. Heat end of copper fitting for proper flow of silver solder. Silver solder flows at approximately 430°F (221°C).
5. Use caution with brazing rod or other higher temperature techniques. Overheating will cause leaks.
6. Remove wet cloth and remove all soldering flux immediately after installation. Flux chlorides will cause premature failure of joint.



RATED PRESSURES @ ELEVATED TEMPERATURES (psi) (kg/cm²)

Table with columns for Hose Size (in/mm), 150°F/66°C, 300°F/149°C, and 400°F/204°C, with corresponding pressure ratings.

When using these products in stainless steel water systems, dielectric unions must be used on each end to prevent leakage from galvanic action.

CPSB DIMENSIONS AND PRESSURE RATINGS (American Units)

Table with columns for Type, Tubing Size & End to End (in), Live Length (in), Corrugations per foot, Maximum Permanent Lateral Offset (in), and Rated Pressure @70°F (psi).

CPSB DIMENSIONS AND PRESSURE RATINGS (Metric Units)

Table with columns for Type, Tubing Size & End to End (mm), Live Length (mm), Corrugations per meter, Maximum Permanent Lateral Offset (mm), and Rated Pressure @21°C (kg/cm²).

End to End Tolerance: minus 1% plus 3%. Minimum Burst is four times the Rated Pressure. Safety factor of 4. Female end fits over copper tubing, e.g. 1/2 x 6 1/2 (15 x 165mm) fits over 1/2" (15mm) tubing. Lateral Offset one side of centerline and normal machinery vibration. If intermittent in both directions, reduce by 50%.

Inventory table with columns for QTY, SIZE, and TAG.

Inventory table with columns for QTY, SIZE, and TAG.



MASON INDUSTRIES, Inc.

MERCER RUBBER Co.

350 Rabro Drive, Hauppauge, NY 11788
Mason- 631/348-0282 • Info@Mason-Ind.com
Mercer- 631/582-1524 • Info@Mercer-Rubber.com
FAX 631/348-0279



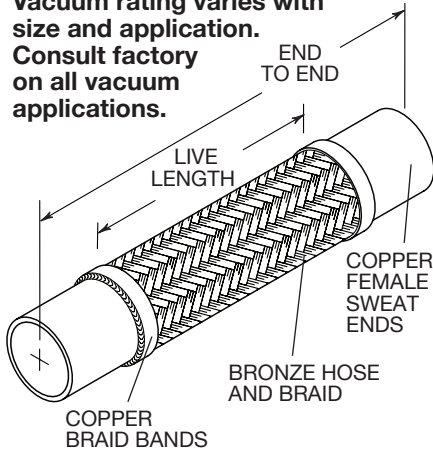
JOB NAME
CUSTOMER
CUSTOMER P.O.
MASON M.
DWG No.

CPSB

BRAIDED BRONZE HOSE with COPPER SWEAT ENDS

WARNING! If disinfecting (chlorinating) is required per the International Plumbing Code, AWWA C651, and AWWA C652, then tablets and granular chlorine (calcium hypochlorite), and chlorine for swimming pool disinfection CANNOT be used on our products. We recommend chlorinating with diluted liquid chlorine (sodium hypochlorite) and immediately flushing thoroughly with potable water, as defined in the above Code. All traces of chlorine must be removed, since residual chlorine will cause corrosion and lead to premature failure of our products. Failure to do so will void our warranty. Mason recommends installing hoses vertically where feasible to promote drainage of chlorine.

Vacuum rating varies with size and application. Consult factory on all vacuum applications.

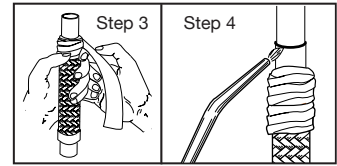


INSTALLATION:

- 1. Thoroughly clean male and female ends using steel wool and steel brushes.
2. Apply flux.
3. Wrap base of copper fitting on connector and 2" (50mm) of the braid with a wet cloth to prevent overheating during soldering.
4. Direct the torch away from the base of the copper fitting and braided section. Avoid contact of the flame with the base of the copper fitting and braid. Heat end of copper fitting for proper flow of silver solder. Silver solder flows at approximately 430°F (221°C).
5. Use caution with brazing rod or other higher temperature techniques. Overheating will cause leaks.
6. Remove wet cloth and remove all soldering flux immediately after installation. Flux chlorides will cause premature failure of joint.

RATED PRESSURES @ ELEVATED TEMPERATURES (psi) (kg/cm²)

Table with 4 columns: Hose Size (in) (mm), 150°F (66°C) Factor 0.92, 300°F (149°C) Factor 0.83, 400°F (204°C) Factor 0.78. Rows include sizes 1/2, 3/4, 1, 1 1/4, 1 1/2, 2, 2 1/2, 3, 4.



When using these products in stainless steel water systems, dielectric unions must be used on each end to prevent leakage from galvanic action.

CPSB DIMENSIONS AND PRESSURE RATINGS (American Units)

Table with 5 columns: Type, Tubing Size & End to End (in), Live Length (in), Corrugations per foot, Maximum Permanent Lateral Offset (in), Rated Pressure @70°F (psi). Rows include various sizes from 1/2" to 4" and 12" to 36" lengths.

CPSB DIMENSIONS AND PRESSURE RATINGS (Metric Units)

Table with 5 columns: Type, Tubing Size & End to End (mm), Live Length (mm), Corrugations per meter, Maximum Permanent Lateral Offset (mm), Rated Pressure @21°C (kg/cm²). Rows include various sizes from 15mm to 100mm and 210mm to 915mm lengths.

End to End Tolerance: minus 1% plus 3%. Minimum Burst is four times the Rated Pressure. Safety factor of 4. Female end fits over copper tubing, e.g. 1/2 x 12 (15 x 305mm) fits over 1/2" (15mm) tubing. Lateral Offset one side of centerline and normal machinery vibration. If intermittent in both directions, reduce by 50%.

Table with 3 columns: QTY, SIZE, TAG

Table with 3 columns: QTY, SIZE, TAG