



MASON INDUSTRIES, Inc.

MERCER RUBBER Co.

350 Rabro Drive, Hauppauge, NY 11788
Mason- 631/348-0282 • Info@Mason-Ind.com
Mercer- 631/582-1524 • Info@Mercer-Rubber.com
FAX 631/348-0279



JOB NAME _____
CUSTOMER _____
CUSTOMER P.O. _____
MASON M. _____
DWG No. _____

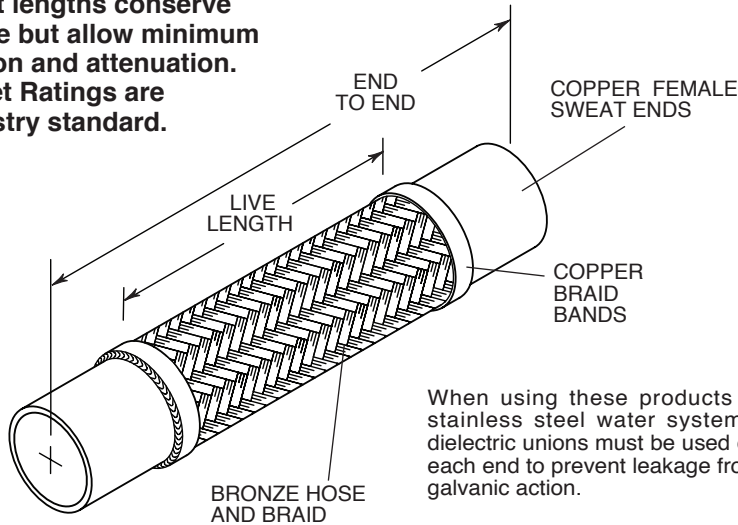
CPSB-NSF

BRONZE BRAIDED HOSE with COPPER SWEAT ENDS for DRINKING WATER SYSTEMS

Industry Standard Pump Connectors

Short lengths conserve space but allow minimum motion and attenuation. Offset Ratings are industry standard.

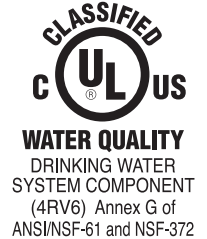
Conforms to UL and Annex G of ANSI/NSF-61 and NSF-372 Approved Temperature Range.



When using these products in stainless steel water systems, dielectric unions must be used on each end to prevent leakage from galvanic action.

WARNING! If disinfecting (chlorinating) is required per the International Plumbing Code, AWWA C651, and AWWA C652, then tablets and granular chlorine (calcium hypochlorite), and chlorine for swimming pool disinfection CANNOT be used on our products. We recommend chlorinating with diluted liquid chlorine (sodium hypochlorite) and immediately flushing thoroughly with potable water, as defined in the above Code. All traces of chlorine must be removed, since residual chlorine will cause corrosion and lead to premature failure of our products. Failure to do so will void our warranty. Mason recommends installing hoses vertically where feasible to promote drainage of chlorine.

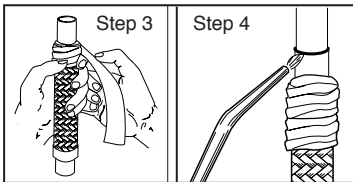
LEAD FREE: The surface contacted by consumable water contains less than one quarter of one percent (0.25%) of lead by weight. These flexible joint fitting assemblies are UL Listed under File MH48651 and are intended for installation in accordance with the Mason installation instructions and the applicable requirements in Annex G of ANSI/NSF-61 and NSF-372.



Mason Industries ensures for all UL Listed Products:

INSTALLATION:

1. Thoroughly clean male and female ends using steel wool and steel brushes.
2. Apply flux.
3. Wrap base of copper fitting on connector and 2" (50mm) of the braid with a wet cloth to prevent overheating during soldering.
4. Direct the torch away from the base of the copper fitting and braided section. Avoid contact of the flame with the base of the copper fitting and braid. Heat end of copper fitting for proper flow of silver solder. Silver solder flows at approximately 430°F (221°C).
5. Use caution with brazing rod or other higher temperature techniques. Overheating will cause leaks.
6. Remove wet cloth and remove all soldering flux immediately after installation. Flux chlorides will cause premature failure of joint.



1. All hose dimensions meet our specifications and dimensions as tabulated.
2. Each assembly is pressure tested using Nitrogen Gas for 1 minute at 1 1/2 times the rated working pressure with no leaks.
3. A metal tag is attached which shows the UL Mark and Identification Number, our name, the location (US), and the Part Number with the approval date (month and year).
4. Two product stickers which show the UL Mark and Identification Number are on each shipping crate.

Vacuum rating varies with size and application. Consult factory on all vacuum applications.

CPSB-NSF DIMENSIONS AND PRESSURE RATINGS (American Units)

Type	Tubing Size & End to End (in)	Live Length (in)	Corrugations per foot	Maximum Permanent Lateral Offset (in)	Rated Pressure @70°F (psi)
CPSB-NSF	1/2 X 6 1/2	23/4	73	1/8	500
CPSB-NSF	3/4 X 7	23/4	67	1/8	470
CPSB-NSF	1 X 8	33/8	58	1/8	450
CPSB-NSF	1 1/4 X 8 1/2	33/4	55	1/8	400
CPSB-NSF	1 1/2 X 9	4	53	1/8	335
CPSB-NSF	2 X 12	6 1/2	51	1/4	235
CPSB-NSF	2 1/2 X 12	43/4	34	1/8	230
CPSB-NSF	3 X 12	4 1/2	30	1/8	225
CPSB-NSF	4 X 18	9 1/2	28	1/2	220

CPSB-NSF DIMENSIONS AND PRESSURE RATINGS (Metric Units)

Type	Tubing Size & End to End (mm)	Live Length (mm)	Corrugations per meter	Maximum Permanent Lateral Offset (mm)	Rated Pressure @21°C (kg/cm²)
CPSB-NSF	15 X 165	70	240	3	37
CPSB-NSF	20 X 178	70	220	3	32
CPSB-NSF	25 X 203	86	190	3	31
CPSB-NSF	32 X 216	95	180	3	28
CPSB-NSF	40 X 229	102	174	3	23
CPSB-NSF	50 X 305	165	167	6	16
CPSB-NSF	65 X 305	121	112	3	16
CPSB-NSF	80 X 305	114	98	3	15
CPSB-NSF	100 X 457	241	92	13	15

End to End Tolerance: minus 1% plus 3%. Minimum Burst is four times the Rated Pressure. Safety factor of 4.

Female end fits over copper tubing, e.g. 1/2 x 6 1/2 (15 x 165mm) fits over 1/2" (15mm) tubing.

Lateral Offset one side of centerline and normal machinery vibration. If intermittent in both directions, reduce by 50%.

QTY	SIZE	TAG

QTY	SIZE	TAG



MASON INDUSTRIES, Inc.

MERCER RUBBER Co.

350 Rabro Drive, Hauppauge, NY 11788
Mason- 631/348-0282 • Info@Mason-Ind.com
Mercer- 631/582-1524 • Info@Mercer-Rubber.com
FAX 631/348-0279

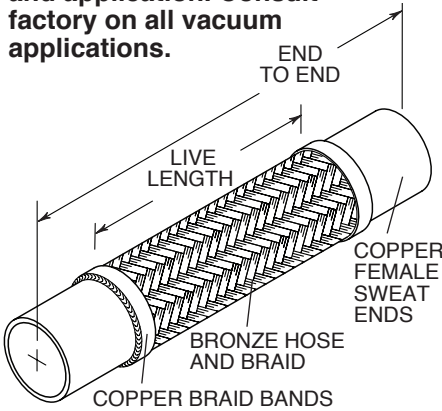


JOB NAME
CUSTOMER
CUSTOMER P.O.
MASON M.
DWG No.

CPSB-NSF

BRONZE BRAIDED HOSE with COPPER SWEAT ENDS for DRINKING WATER SYSTEMS

Vacuum rating varies with size and application. Consult factory on all vacuum applications.



When using CPSB-NSF products in stainless steel water systems, dielectric unions must be used on each end to prevent leakage from galvanic action.

Conforms to UL and Annex G of ANSI/NSF-61 and NSF-372 Approved Temperature Range.

WARNING! If disinfecting (chlorinating) is required per the International Plumbing Code, AWWA C651, and AWWA C652, then tablets and granular chlorine (calcium hypochlorite), and chlorine for swimming pool disinfection CANNOT be used on our products.

INSTALLATION:

- 1. Thoroughly clean male and female ends using steel wool and steel brushes.
2. Apply flux.
3. Wrap base of copper fitting on connector and 2" (50mm) of the braid with a wet cloth to prevent overheating during soldering.
4. Direct the torch away from the base of the copper fitting and braided section.
5. Use caution with brazing rod or other higher temperature techniques.
6. Remove wet cloth and remove all soldering flux immediately after installation.

LEAD FREE: The surface contacted by consumable water contains less than one quarter of one percent (0.25%) of lead by weight. These flexible joint fitting assemblies are UL Listed under File MH48651 and are intended for installation in accordance with the Mason installation instructions and the applicable requirements in Annex G of ANSI/NSF-61 and NSF-372.

Mason Industries ensures for all UL Listed Products:

- 1. All hose dimensions meet our specifications and dimensions as tabulated.
2. Each assembly is pressure tested using Nitrogen Gas for 1 minute at 1 1/2 times the rated working pressure with no leaks.
3. A metal tag is attached which shows the UL Mark and Identification Number, our name, the location (US), and the Part Number with the approval date (month and year).
4. Two product stickers which show the UL Mark and Identification Number are on each shipping crate.



WATER QUALITY DRINKING WATER SYSTEM COMPONENT (4RV6) Annex G of ANSI/NSF-61 and NSF-372

CPSB-NSF DIMENSIONS AND PRESSURE RATINGS (American Units)

Table with 6 columns: Type, Tubing Size & End to End (in), Live Length (in), Corrugations per foot, Maximum Permanent Lateral Offset (in), Rated Pressure @70°F (psi)

CPSB-NSF DIMENSIONS AND PRESSURE RATINGS (Metric Units)

Table with 6 columns: Type, Tubing Size & End to End (mm), Live Length (mm), Corrugations per meter, Maximum Permanent Lateral Offset (mm), Rated Pressure @21°C (kg/cm²)

End to End Tolerance: minus 1% plus 3%. Minimum Burst is four times the Rated Pressure. Safety factor of 4. Female end fits over copper tubing, e.g. 1/2 x 12 (15 x 305mm) fits over 1/2" (15mm) tubing. Lateral Offset one side of centerline and normal machinery vibration. If intermittent in both directions, reduce by 50%.

Table with 3 columns: QTY, SIZE, TAG

Table with 3 columns: QTY, SIZE, TAG

Certification Form S-5050a 08/2019 DWN CHKD DATE DWG No.