



MASON INDUSTRIES, Inc.

MERCER RUBBER Co.

350 Rabro Drive, Hauppauge, NY 11788
Mason- 631/348-0282 • Info@Mason-Ind.com
Mercer- 631/582-1524 • Info@Mercer-Rubber.com
FAX 631/348-0279

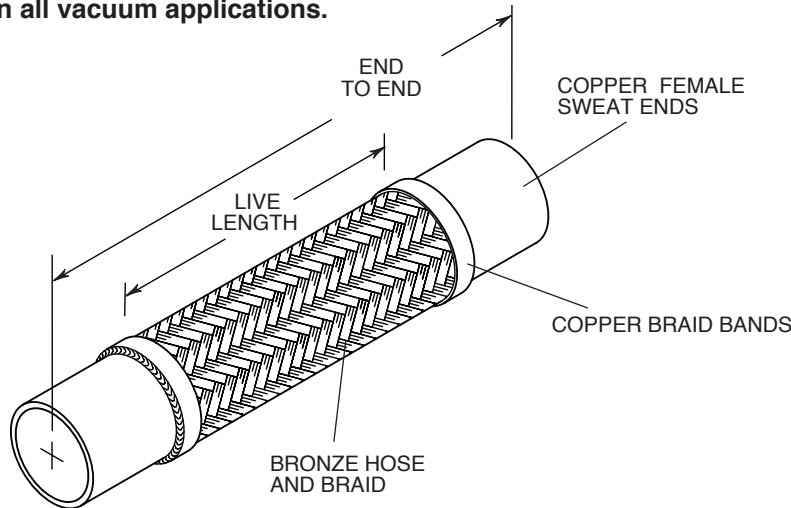


JOB NAME
CUSTOMER
CUSTOMER P.O.
MASON M.
DWG No.

CPSB-MG

MEDICAL GAS
RATED BRAIDED
BRONZE HOSE
with COPPER
SWEAT ENDS

Vacuum rating varies with size and application. Consult factory on all vacuum applications.

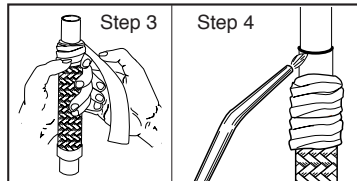


NOTE: CPSB-MG hoses are cleaned and bagged for medical gas applications per CGA G-4.1. Manufactured in accordance with NFPA99 Requirements.

Industry Standard Pump Connectors
Short lengths conserve space but allow minimum motion and attenuation. Offset Ratings are industry standard.

INSTALLATION:

- 1. Thoroughly clean male and female ends using steel wool and steel brushes.
2. Nitrogen purge- flux not permitted.
3. Wrap base of copper fitting on connector and 2" (50mm) of the braid with a wet cloth to prevent overheating during soldering.
4. Direct the torch away from the base of the copper fitting and braided section. Avoid contact of the flame with the base of the copper fitting and braid. Heat end of copper fitting for proper flow of braze.
5. Use caution with brazing rod or other higher temperature techniques. Overheating will cause leaks.
6. Remove wet cloth immediately after installation.



RATED PRESSURES @ ELEVATED TEMPERATURES (psi) (kg/cm²)

Table with 4 columns: Hose Size (in) (mm), 150°F (66°C) Factor 0.92, 300°F (149°C) Factor 0.83, 400°F (204°C) Factor 0.78. Rows include sizes from 1/2 to 4 inches.

When using CPSB-MG products in stainless steel water systems, dielectric unions must be used on each end to prevent leakage from galvanic action.

CPSB-MG DIMENSIONS AND PRESSURE RATINGS (American Units)

Table with 5 columns: Type, Tubing Size & End to End (in), Live Length (in), Corrugations per foot, Maximum Permanent Lateral Offset (in), Rated Pressure @ 70°F (psi). Rows include sizes from 1/2 X 6 1/2 to 4 X 18.

CPSB-MG DIMENSIONS AND PRESSURE RATINGS (Metric Units)

Table with 5 columns: Type, Tubing Size & End to End (mm), Live Length (mm), Corrugations per meter, Maximum Permanent Lateral Offset (mm), Rated Pressure @ 21°C (kg/cm²). Rows include sizes from 15 X 165 to 100 X 457.

End to End Tolerance: minus 1% plus 3%. Minimum Burst is four times the Rated Pressure. Safety factor of 4.
Female end fits over copper tubing, e.g. 1/2 x 6 1/2 (15 x 163mm) fits over 1/2" (15mm) tubing.
Lateral Offset one side of centerline and normal machinery vibration. If intermittent in both directions, reduce by 50%.

Table with 3 columns: QTY, SIZE, TAG. Empty rows for order entry.

Table with 3 columns: QTY, SIZE, TAG. Empty rows for order entry.



MASON INDUSTRIES, Inc.

MERCER RUBBER Co.

350 Rabro Drive, Hauppauge, NY 11788
Mason- 631/348-0282 • Info@Mason-Ind.com
Mercer- 631/582-1524 • Info@Mercer-Rubber.com
FAX 631/348-0279

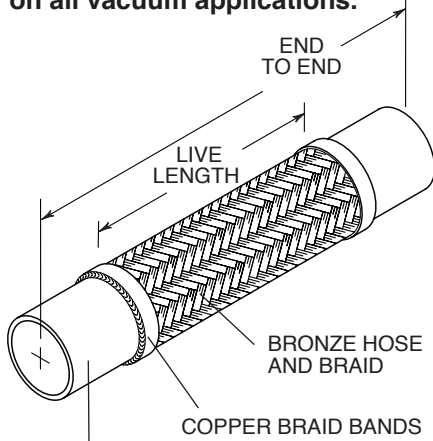


JOB NAME
CUSTOMER
CUSTOMER P.O.
MASON M.
DWG No.

CPSB-MG

MEDICAL GAS
RATED BRAIDED
BRONZE HOSE
with COPPER
SWEAT ENDS

Vacuum rating varies with size and application. Consult factory on all vacuum applications.



COPPER FEMALE SWEAT ENDS

NOTE: CPSB-MG hoses are cleaned and bagged for medical gas applications per CGA G-4.1. Manufactured in accordance with NFPA99 Requirements.

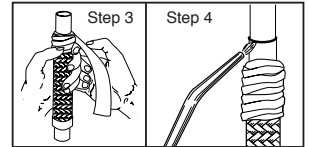
When using CPSB-MG products in stainless steel water systems, dielectric unions must be used on each end to prevent leakage from galvanic action.

INSTALLATION:

- 1. Thoroughly clean male and female ends using steel wool and steel brushes.
2. Nitrogen purge- flux not permitted.
3. Wrap base of copper fitting on connector and 2" (50mm) of the braid with a wet cloth to prevent overheating during soldering.
4. Direct the torch away from the base of the copper fitting and braided section. Avoid contact of the flame with the base of the copper fitting and braid. Heat end of copper fitting for proper flow of braze.
5. Use caution with brazing rod or other higher temperature techniques. Overheating will cause leaks.
6. Remove wet cloth immediately after installation.

RATED PRESSURES @ ELEVATED TEMPERATURES (psi) (kg/cm²)

Table with 4 columns: Hose Size (in/mm), 150°F/66°C, 300°F/149°C, 400°F/204°C. Rows include sizes from 1/2 to 4 inches.



CPSB-MG DIMENSIONS AND PRESSURE RATINGS (American Units)

Table with 6 columns: Type, Tubing Size & End to End (in), Live Length (in), Corrugations per foot, Maximum Permanent Lateral Offset (in), Rated Pressure @70°F (psi). Rows list various hose sizes and their ratings.

CPSB-MG DIMENSIONS AND PRESSURE RATINGS (Metric Units)

Table with 6 columns: Type, Tubing Size & End to End (mm), Live Length (mm), Corrugations per meter, Maximum Permanent Lateral Offset (mm), Rated Pressure @21°C (kg/cm²). Rows list various hose sizes and their ratings.

End to End Tolerance: minus 1% plus 3%. Minimum Burst is four times the Rated Pressure. Safety factor of 4.

Female end fits over copper tubing, e.g. 1/2 x 12 (15 x 300mm) fits over 1/2" (15mm) tubing.

Lateral Offset one side of centerline and normal machinery vibration. If intermittent in both directions, reduce by 50%.

Table with 3 columns: QTY, SIZE, TAG. Empty rows for order entry.

Table with 3 columns: QTY, SIZE, TAG. Empty rows for order entry.