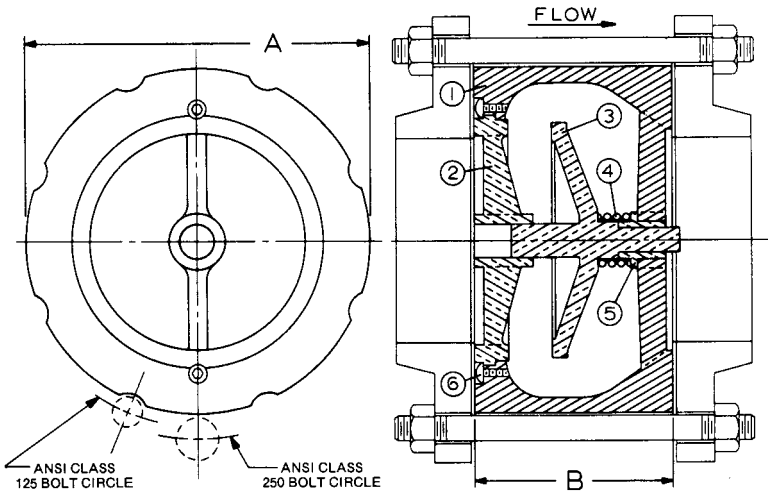


# 1400\* 2"-10"

**Iron Silent Check Valve**  
**125 Class • Wafer Style**  
**Stainless Steel Trim**  
**Conforms to: MSS SP-125**  
**Third Party Certified NSF/ANSI 372-2016**



MATERIAL LIST		
No.	PART	MATERIAL
1	Body	Cast Iron, ASTM A126
2	Seat	St. Steel, TYPE 304
3	Disc	St. Steel, TYPE 304
4	Spring	St. Steel, TYPE 304
5	Bushing	St. Steel, TYPE 304
6	Screw	St. Steel, TYPE 304

Note 1: The wetted surface of this product contacted by consumable water contains less than one quarter of one percent (.25%) of lead by weight.

Note 2: Valve is designed for liquid service only. Install 5 to 10 pipe diameters downstream from pump discharge or elbows to avoid flow turbulence. Valve is designed to be mated to standard steel flanges.

DIMENSIONS - INCHES/MILLIMETERS				
Units	Size	A	B	C <sub>v</sub>
Inches mm	2	4.25 108	2.63 67	66
Inches mm	2 1/2	5.00 127	2.88 73	88
Inches mm	3	5.75 146	3.13 79	130
Inches mm	4	7.00 178	4.00 102	228
Inches mm	5	8.38 213	4.75 121	350
Inches mm	6	9.75 248	5.50 140	520
Inches mm	8	13.38 340	6.50 165	900
Inches mm	10	16.00 406	8.25 210	1450

Sizes 2" thru 6" are combination ANSI Class 125 and 250. 8" and 10" sizes are ANSI Class 125.

**INNOVATION** IN EVERY VALVE



**MILWAUKEE VALVE**

The information presented on this sheet is correct at time of publication. Milwaukee Valve reserves the right to change design and/or materials without notice. For our Installation, Operation and Maintenance Manual and the most current product information go to [www.milwaukeevalve.com](http://www.milwaukeevalve.com). State of California Prop 65 **WARNING:** Cancer and Reproductive Harm. For more information visit [www.p65warnings.ca.gov](http://www.p65warnings.ca.gov).